



EMTRAC

Systems Manager Software

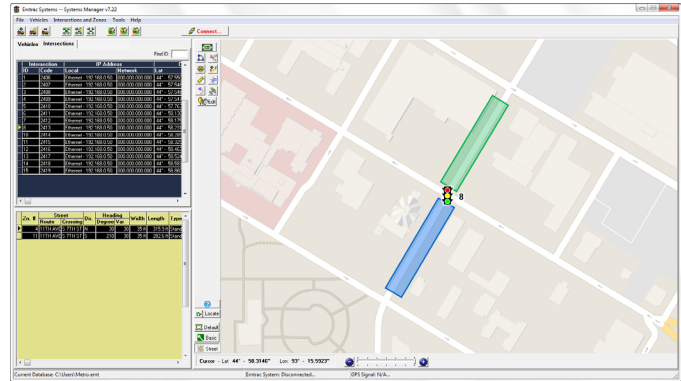
ST-9095

The Systems Manager software enables agencies to fully configure, maintain, and operate their EMTRAC priority control system—from initial database setup to full system customization and operation.

System Manager enables system administrators to to:

- set up equipped vehicles and intersections,
- create location based vehicle-detection zones,
- define the specific conditions under which vehicles request signal priority,
- test system configuration and signal-controller response, and
- retrieve detailed vehicle and intersection activity logs.

Saved configuration data is transferred to EMTRAC hardware via Ethernet, serial, or wireless connection.



Systems Manager - Intersections Tab

Activity Logs

The Systems Manager activity logs are easily customized to include the desired data. The following activity logs are available from the Systems Manager software:

Vehicle Log: For each event, the log indicates the activity type (such as those indicating signal priority requests), activity-start date and time, activity-end date and time, elapsed time, intersection ID, detection zone ID and zone length, velocity in and out of zone, vehicle heading, and signal confirmation (if applicable).

Intersection Log: For each event, the log indicates the event type, event date and time, event duration, intersection ID, zone ID, zone type, zone direction, vehicle ID, vehicle speed, vehicle heading, vehicle priority level, event termination cause, signal confirmation (if applicable), and ETA distance (if applicable).

Systems Manager Features

- Integrated maps enable administrators to easily customize intersections and detection zones
- Designate specific output channels to match signal controller directional channels
- Activity logs may be saved to PDF or exported as Excel spreadsheet for later review
- Remotely connect to wayside units (EMTRAC Priority Detectors) to configure settings or update firmware
- Schedule self testing of EMTRAC components to conduct unit-to-unit communication and response test at specified time intervals

Systems Manager Software Requirements	
Operating System:	Microsoft® Windows XP, Vista, 7, Windows 8.1, Windows 10, or later
Processor:	Intel® Core 2 or AMD Athlon® 64 processor; 2 GHz or faster processor
Memory:	2 GB or higher
Hard Drive:	50 GB minimum available
Device Comm. Support:	Ethernet 100Base-T, RS232 serial port (USB to RS232 adapters allowed), or USB port (depending on device type)
<i>If using the integrated Google Maps, an internet connection is required.</i>	